

Key Signatures

Quick Definition

What is a Key Signature?

To save us from having to add all the sharps or flats whenever we're playing in a given key, we use a key signature at the beginning of the music to make it easier to read.

For example, instead of writing a sharp every time the note F is played, we can write one at the beginning in the key signature, which then tells the musician to play an F# every time.

Key Signatures at Grade 1

At grade one, you will need to know the key signatures for four different major keys:

C Major

G Major

D Major

F Major

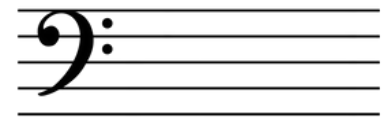
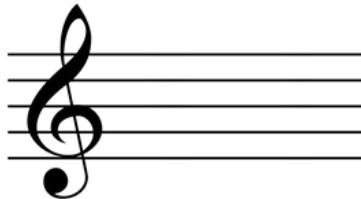
You will need to know how to write them in the **treble** and **bass** clefs. Here are all the key signatures in the treble and bass clefs.

Treble Clef

Bass Clef

C Major

C major has no sharps or flats as its key signature.



G Major

G major has one sharp in its key signature. F#.



D Major

D major has two sharps in its key signature. F# and C#.



F Major

F major has one flat in its key signature. Bb.

